



Smarter  
Faster Decisions

[minervue.com](http://minervue.com)



# Disclaimer

MinerVue is not a licensed financial advisor and does not make investment recommendations regarding any of the companies mentioned in this presentation. The information provided is a summary of what MinerVue understands to be key points that have been made publicly available by ASX-listed companies. While every effort has been made to ensure accuracy, some information may contain errors or omissions. MinerVue accepts no liability for any investment decisions or commercial agreements made by any individual or company based on this presentation.

We do not make any representation or warranty that the information provided on the MinerVue website is complete, accurate, or free from errors. You may only use the information for your personal use and in connection with your own investment portfolio. You must not use the information for any unauthorised, improper, or unlawful purpose. It must not be used in a way that is inconsistent with our obligations to the ASX, or in any manner that causes us to breach those obligations where you have been made aware of them. Additionally, you must not use the information in a way that infringes upon the rights of any other person. You are not permitted to copy, download, store, reproduce, display, modify, transmit, or distribute the information. Nor may you transfer or publish any part of the information to third parties. If you become aware that you have used or accessed the information in a way that contravenes or is inconsistent with these Terms of Use, you must notify us as soon as reasonably practicable.

Unless otherwise stated, all copyright and intellectual property rights in the design, content, text, graphics, images, data, information, software, and other materials on the the website including the layout and arrangement are owned by or licensed to MinerVue. This includes all trademarks, service marks, trade names, and branding featured on the site. No rights or licences are granted to use any of this intellectual property, except as required to access and view the website content for personal, non-commercial use. No part of the website including its content and information may be copied, reproduced, distributed, modified, uploaded, transmitted, republished, or embedded within another website without prior written permission from MinerVue.

WATCH

See it in  
action:  
**Filter.**  
**Compare.**  
**Decide.**

The screenshot displays the MINERVUE Kenex web application interface. The top navigation bar includes the MINERVUE logo, the Kenex logo (A product by MINERVUE), and navigation links for KenexVue, CompanyVue, CompanyMarketVue, and ResourceMarketVue. A search bar labeled 'Company Search...' is located in the top right corner.

The left sidebar contains a 'Reset Filters' button and several filter sections:

- Company Classification:** Select Company Classification
- Commodity of Interest:** Select Commodity
- Country of Operation:** Select Country
- State of Operation:** Select State
- Company Name:** Select Company
- ASX Ticker:** Select ASX Ticker
- Market Cap:** Min Market Cap (M) and Max Market Cap (M) with input fields (1 and 100000).
- Cash:** Min Cash (M) and Max Cash (M) with input fields (1 and 100000).
- EV:** Min EV (M) and Max EV (M) with input fields (1 and 100000).

The main area features a map of Southeast Asia and Oceania, densely populated with colored circular markers representing data points. The map includes labels for various countries and cities, such as Vietnam, Cambodia, Philippines, Malaysia, Indonesia, Papua New Guinea, and Australia. At the bottom of the map, there are buttons for 'Layers', 'Base Map', and a help icon. The footer of the map area includes 'MapLibre | © MapTier | © OpenStreetMap contributors' and a small 'Macquarie Island' label.

“Real-time, visual decision-making at your fingertips.”

## DEVELOPMENT

# From 25 years of Prospectivity Modelling to the Launch of MinerVue

We've spent the past 25 years delivering successful prospectivity modelling to support exploration targeting, project management, and ASX listings.

We've compiled and today manage **over 23 terabytes of geological data**, including:

## 3M

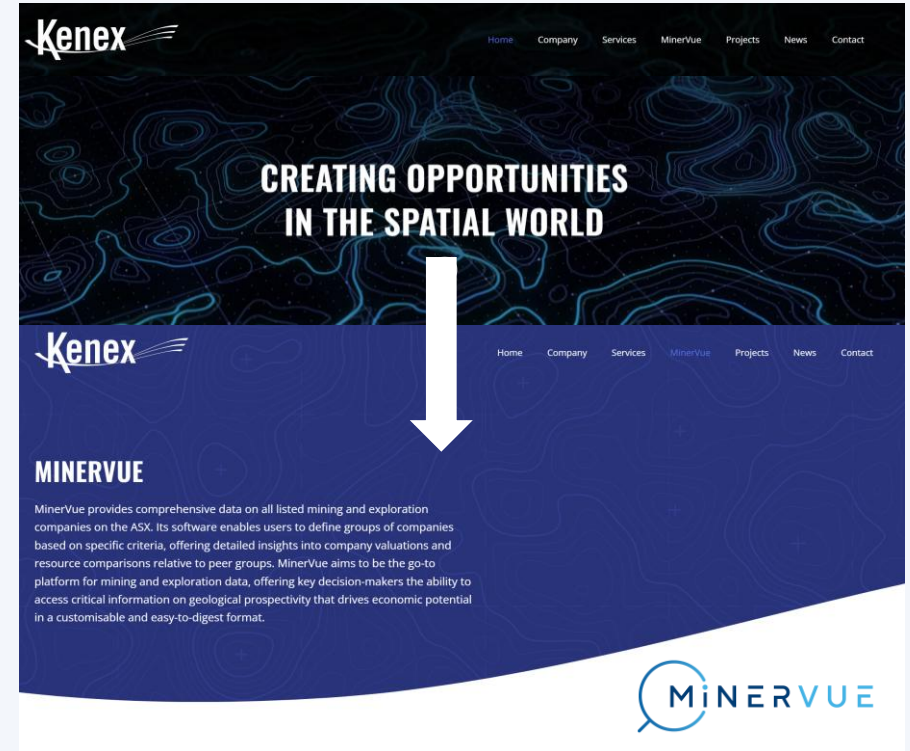
**Drill Collars**

## 48M

**Drill Assays**

## 5M

**Geochemical Data Points**



We developed **MinerVue** to connect this rich dataset directly with over 750 ASX-listed mining and exploration companies making it easier than ever to search, compare, and analyse data in one place quickly.

Whether you're identifying undervalued mineral companies or building a story for investors, **MinerVue** is your tool for smarter exploration and investment decisions.

WHAT

# What's the Problem?

## Problem #1

Finding credible mining investment opportunities is hard.

## Problem #2

Valuable data is scattered across PDFs, websites, and static reports.

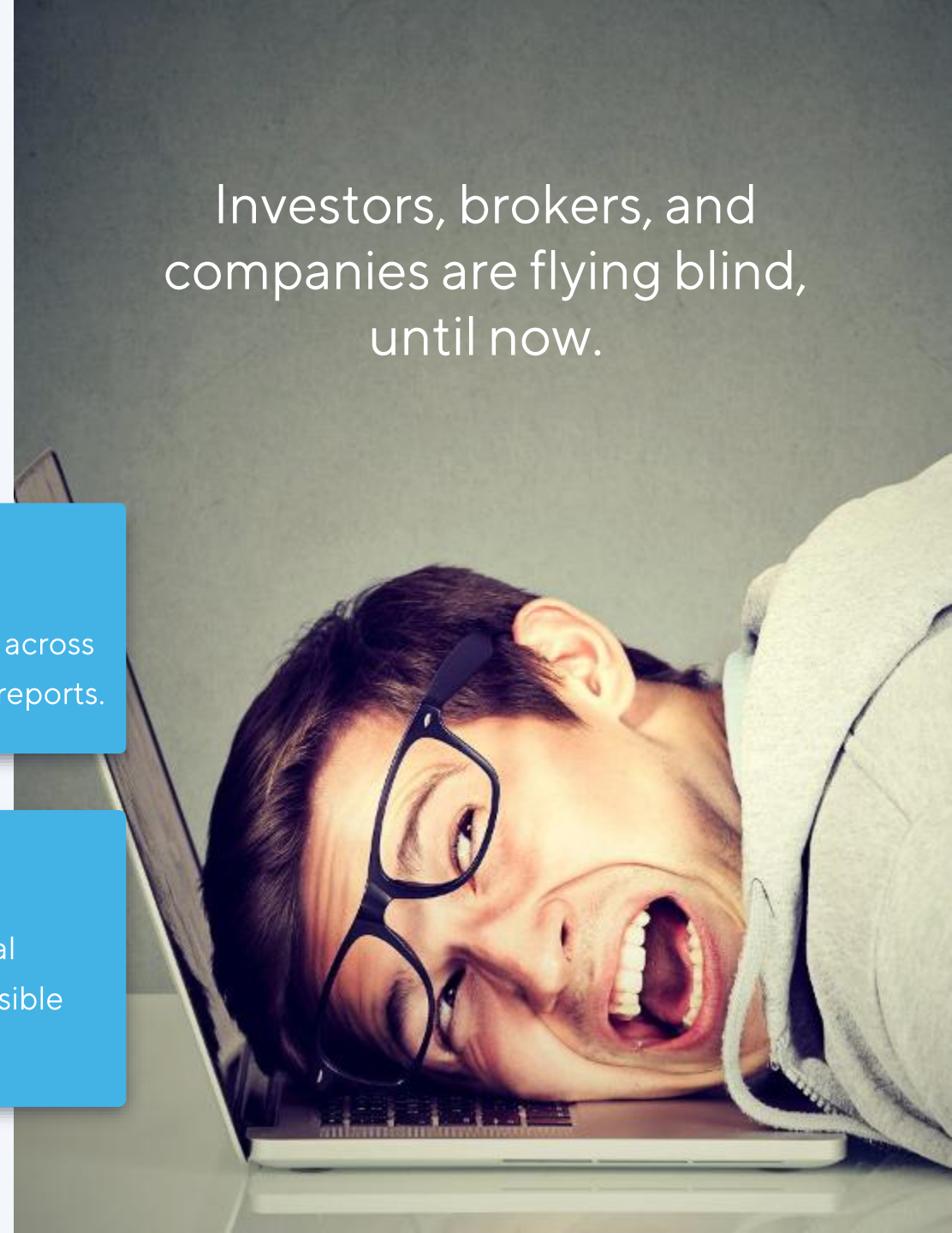
## Problem #3

Peer comparisons require time consuming Google searches and messy spreadsheets.

## Problem #4

Real-time, geological context is almost impossible to overlay.

Investors, brokers, and companies are flying blind, until now.



# The Old Way vs. the MinerVue Way

1. Search companies
2. Peer comparisons
3. Geological context
4. Drill data access

## The Old Way

Google + Excel  
Days of data wrangling  
External consultants  
Disconnected files



KenexVue & CompanyVue  
Seconds with filters  
Built-in maps & layers  
Live drill density maps

**Result: Save days of effort.  
Make smarter decisions, faster.**

END USER

# Who is MinerVue for?



**Investors**  
Investors wanting to find quality opportunities fast.



**Brokers & Analysts**  
Brokers and analysts needing quick company comparisons.



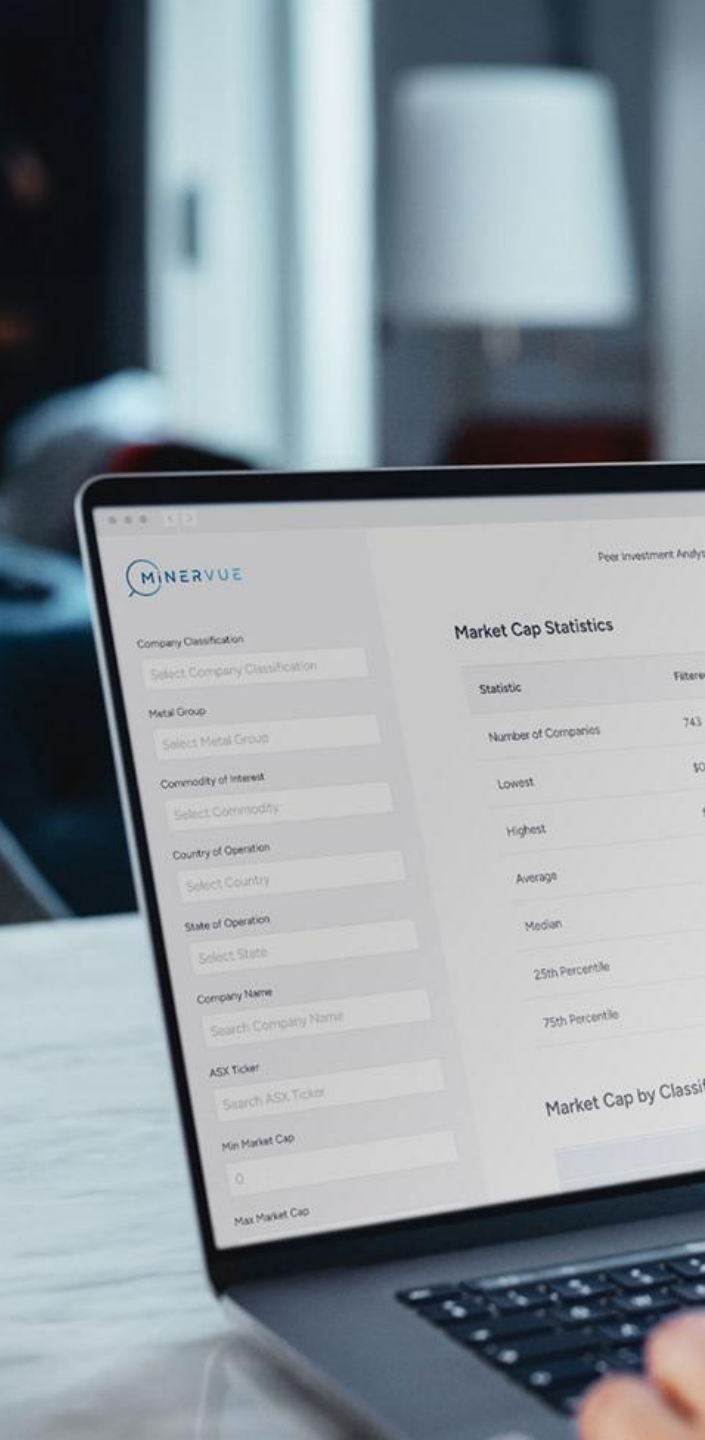
**Companies**  
Companies looking to benchmark against peers.



**Funds, Companies & Institutions**  
Funds and institutions scanning for undervalued or nearby projects.



**Suppliers**  
Suppliers looking for Companies to approach for services they offer.



KENEXVUE

# KenexVue: Smarter Search. Faster Answers.

Want to find gold fast?

Looking for ASX-listed gold companies with projects in Western Australia?

- 📍 **KenexVue** gets you there in under a minute. Forget 5 days of Google searches and stitching together data in a GIS.
- 📍 With **KenexVue**, you get real-time access to project locations, geological context, and company information without the hassle.

The screenshot displays the KenexVue web application interface. At the top left, the MINERVUE logo is visible, followed by the text "A product by Kenex". The interface features a sidebar on the left with various filters and a main map area on the right showing a map of Western Australia with numerous colored dots representing project locations. The filters include:

- Project Stage:** Select Project Stage (dropdown)
- Commodity:** Gold (selected, with a close button)
- Country:** Australia (selected, with a close button)
- State:** Western Australia (selected, with a close button)
- Company Name:** Select Company (dropdown)
- ASX Ticker:** Select ASX Ticker (dropdown)
- Min Market Cap (M):** 1 (input field)
- Max Market Cap (M):** 100000 (input field)

The map area shows a detailed view of Western Australia with various cities labeled, including Broome, Port Hedland, Karratha, Geraldton, Perth, Mandurah, and Albany. The map is overlaid with a grid and a scale bar. At the bottom of the map area, there are buttons for "Layers", "Base Map", and a help icon.

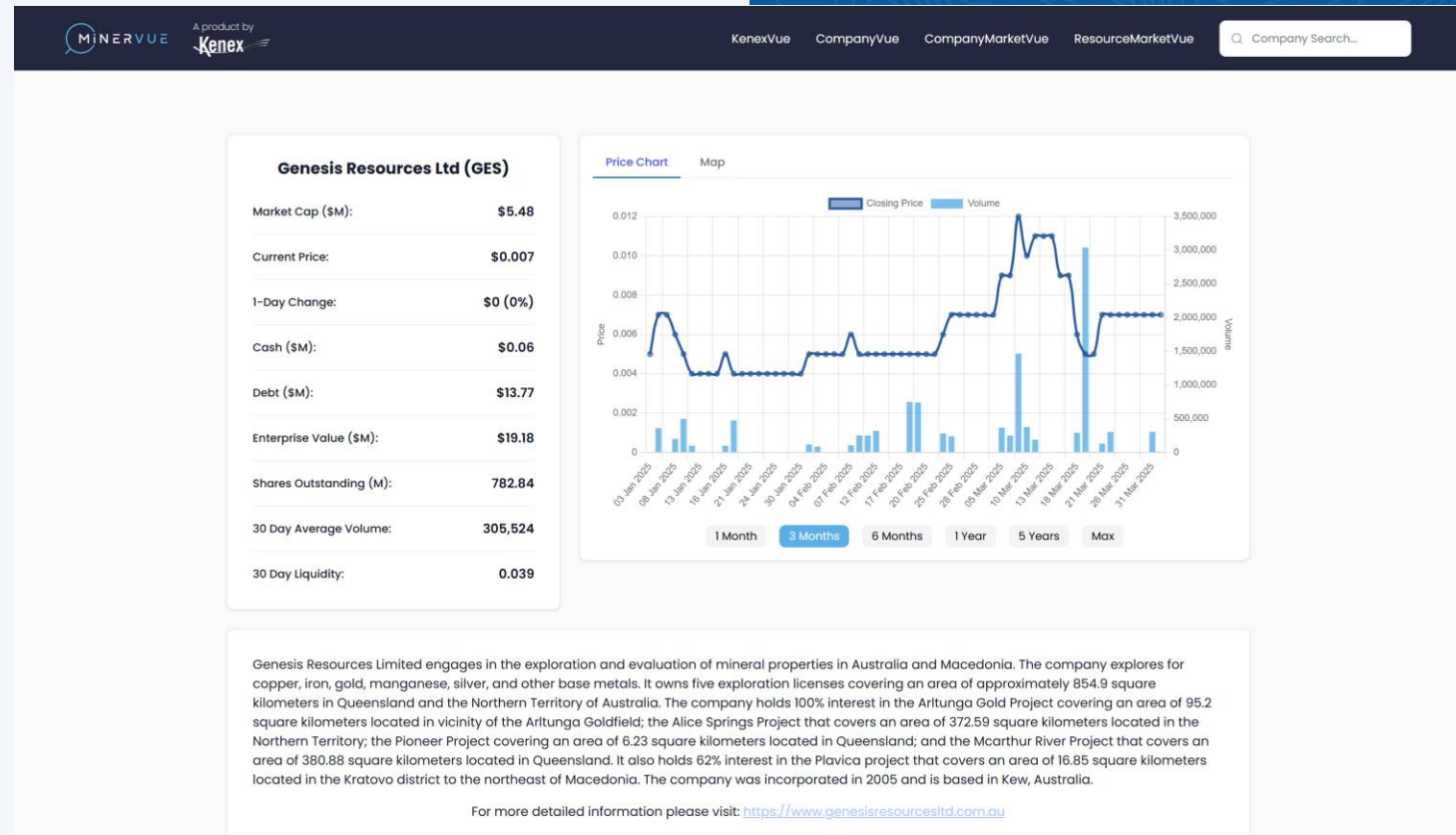


# CompanyVue: Find the Right Companies Faster

Looking for ASX-listed gold companies with projects in Western Australia?

- 30 seconds in MinerVue vs 3 days using Google and Excel

With **CompanyVue**, you can instantly filter companies by commodity, location, project stage, and more then access real-time financials, market cap, and valuation data without lifting a spreadsheet.



COMPANYMARKETVUE

# CompanyMarketVue: Spot the Standouts

Looking for potentially undervalued gold companies currently drilling in Western Australia?

- Find them in 5 minutes with MinerVue
- Not possible with Google or other platforms

With **CompanyMarketVue**, you can quickly filter companies by commodity, project stage, and valuation data so you can focus on real opportunities, not guesswork.

Perfect for investors, brokers, and IR professionals looking to benchmark or discover the next opportunity.

### Gorilla Gold Mines Ltd (GG8)

Market Cap (\$M):	\$196.43
Current Price:	\$0.41
1-Day Change:	-\$0.035 (-7.8652%)
Cash (\$M):	-
Debt (\$M):	-
Enterprise Value (\$M):	\$196.14
Shares Outstanding (M):	581.22

Price Chart    Map

#### Prospects ?

Project	Prospect	Commodity	Stage	Region	Country
Denain Project	Denain	Au	2 Early Drilling	North America	Canada
Mulwarrie Project	Mulwarrie	Au	2 Early Drilling	Oceania	Australia
Vivien Project	Vivien	Au	2 Early Drilling	Oceania	Australia

#### Resources ?

Project	Prospect	Category	Tonnes	Au Grade	Au Contained
Comet Vale Project	Comet Vale Deposit - Open Pit	Indicated	182,478	4.34	24,633
Comet Vale Project	Comet Vale Deposit - Open Pit	Inferred	186,482	2.34	13,573
Comet Vale Project	Comet Vale Deposit - Underground	Indicated	128,390	7.41	29,591
Comet Vale Project	Comet Vale Deposit - Underground	Inferred	122,138	6.53	24,807
Labyrinth Gold Project	Labyrinth Gold	Inferred	3,000,000	5.00	466,553
<b>TOTALS</b>			<b>3,619,488</b>	<b>4.97</b>	<b>559,157</b>

# ResourceMarketVue: Benchmark Resources. Spot Value.

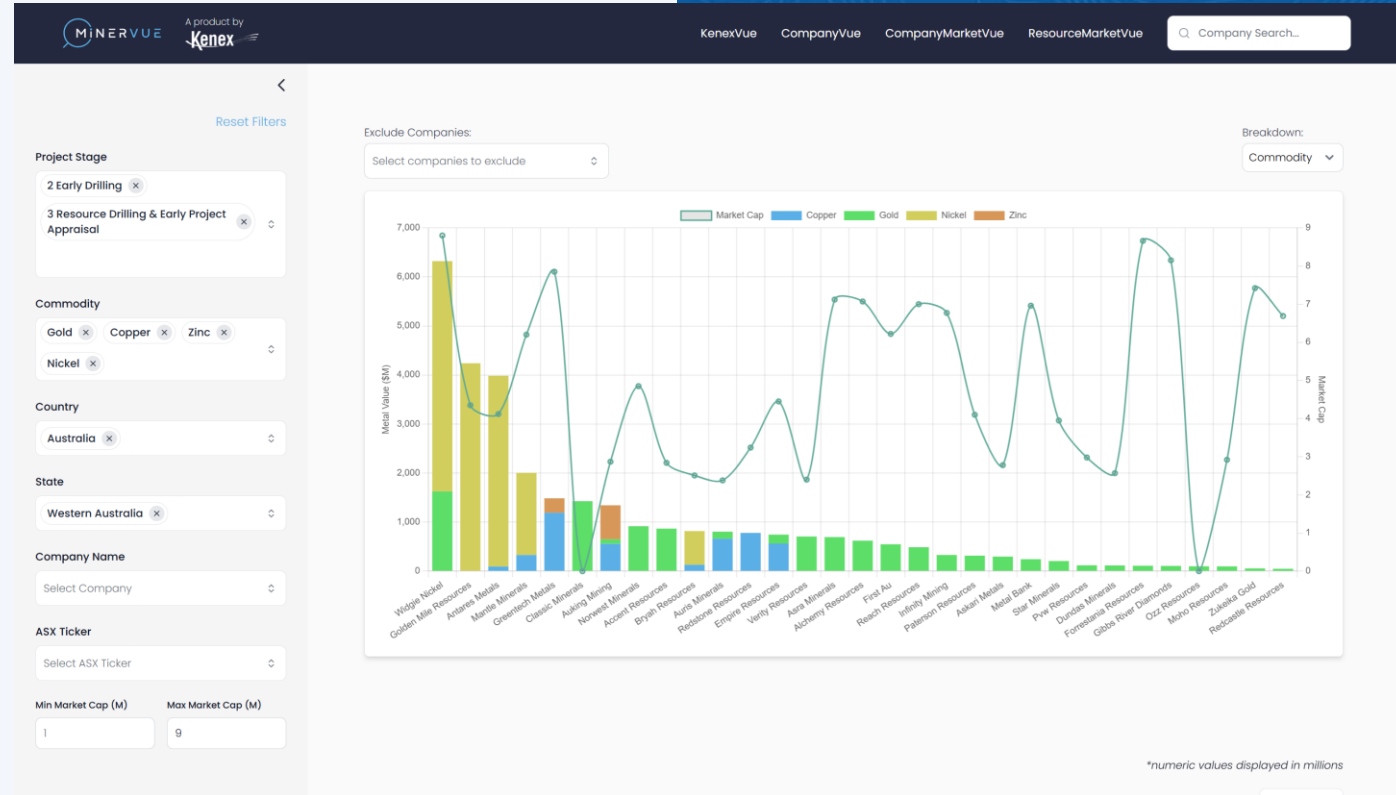
Looking for potentially undervalued ASX-listed gold companies with defined resources in Western Australia?

- Find them in 5 minutes with MinerVue
- Would normally take 10 days using Google and Excel if the data is even available.

With **ResourceMarketVue**, you can:

- Instantly compare companies by contained metal and JORC category
- Visualise who's punching above or below their market cap
- Uncover new opportunities with real resource data in one place

Ideal for identifying peer gaps, IR benchmarking, and finding overlooked value.



# What's Next for MinerVue? Smarter Tools, Deeper Data.

MinerVue is just getting started. We're actively developing new features based on user feedback to make the platform even more powerful and intuitive.

## **New Filters Coming Soon:**

- 🔗 Planned work/programs
- 🔗 Project deposit type
- 🔗 Nearology filter; quickly identify companies near a new discovery or your own projects

## **ProducerVue (in development):**

- 🔗 Visualise producer performance
- 🔗 Track financial metrics for established companies

## **CompanyVue (coming soon):**

Adding board and management

## **More Maps in KenexVue:**

- 🔗 Processing facility locations
- 🔗 Commodity prospectivity layers
- 🔗 Drill density by depth
- 🔗 Geochemical data coverage maps

**MinerVue continues to grow as your one-stop shop for linking geology with real-time financials delivering the clarity you need in minutes.**

## WHAT DO YOU GET

# Pricing – What Do You Get?

## Free (Registration Only):

- Access to KenexVue
- Interactive maps with project locations and geology
- View company summaries and locations

## Full Access (MinerVue): AUD \$3,000/year:

- All of the above plus: CompanyVue, CompanyMarketVue, and ResourceMarketVue
- Advanced filters and peer comparison
- JORC breakdowns, valuation metrics, financial overlays
- Regular feature updates and enhancements

**Custom datasets or analysis? Just ask.**



[SIGN UP](#)

# Sign Up and Start Exploring

**MinerVue is live. We're growing. And we're listening.**

- Sign up at [www.minervue.com](http://www.minervue.com)
- Book a demo with [at info@minervue.com](mailto:info@minervue.com)
- Follow us on LinkedIn and Twitter: [@Miner\\_Vue](#)

**Scan to sign up**



**See the Opportunity. Faster. At Booth 11**



**Thank You**



[minervue.com](https://minervue.com)

ALL IN ONE

# Everything You Need. All in One Platform



## Explore with **KenexVue**

Instantly locate and assess ASX-listed companies' exploration and mining assets using our interactive geological map, built on 25+ years of global prospectivity modelling.



## Find your next investment fast with **CompanyMarketVue**

Filter by commodity, project stage, market cap, and more to uncover promising investments or benchmark your company against peers to stand out to investors in one investment tool quickly.



## Compare resources with **ResourceMarketVue**

Benchmark your peers and evaluate resource size, grade, and JORC classification to find undervalued projects and highlight your strengths.



## Cut through the noise with **CompanyVue**

Quickly access financial health, valuation metrics, and peer comparisons; no more spreadsheets, no more wasted time.



## **MinerVue**

connects geological data with financial information in minutes so you can see the opportunity, not just the noise. Stop relying on scattered sources and outdated spreadsheets. MinerVue gives you all you need to move faster and decide smarter.



## WHY

# Why MinerVue?

After 18 months of development, **MinerVue is now live** bringing powerful financial and geological intelligence to your fingertips.

MinerVue connects detailed geological datasets with live ASX company financials to help:

- 🔍 **Discover undervalued opportunities**
- 🔍 **Compare companies by resource, valuation, and location**
- 🔍 **Benchmark peers and support better investment decisions**

