



30/8/2019

Duke Exploration Updates: Mt. Flora drilling programme is starting soon!



Duke Exploration is preparing to drill at the Mt Flora prospect in their Bundarra tenement EPM 26499 located in North Queensland. Three diamond holes for a total of 545 m are planned to assess the copper-gold-silver mineralisation potential of the Mt Flora mine area.

The holes are designed to intersect several mineralised veins that have been historically worked on surface and in underground shafts, and to follow up good drilling results obtained by Endeavour Oil Company in the 1970s.

Drill pads and access tracks are being constructed, and a drilling start date will be known next week.

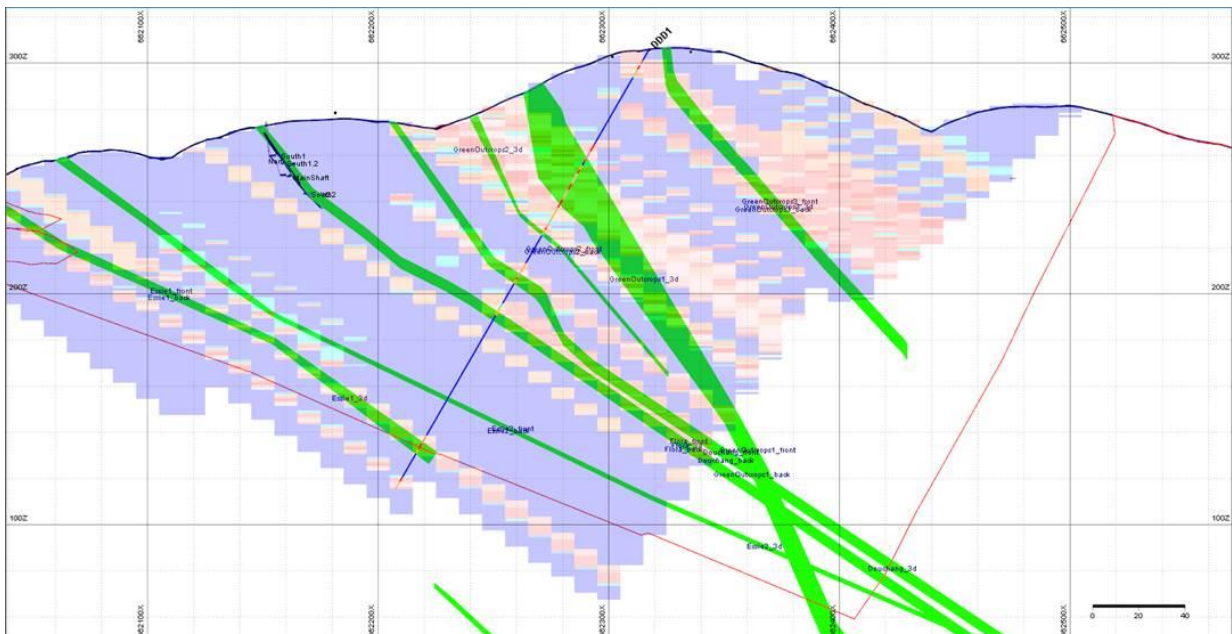


Figure 1. Planned drillhole DDD1 in relation to mineralised veins and initial copper block model.



Figure 2. Access track construction on Mt Flora

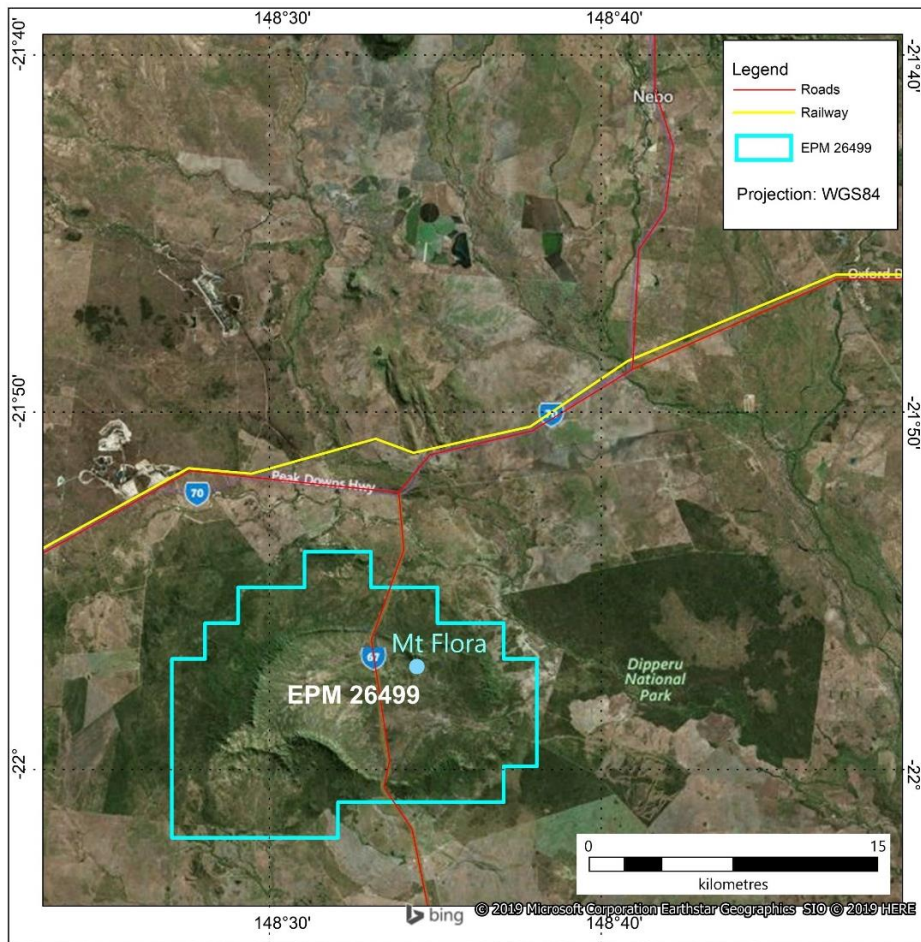


Figure3. Mt Flora location