

New Insights into the Origin and Distribution of Phosphate Deposits on the Chatham Rise



Simon HH Nielsen
Kenex, Ltd.

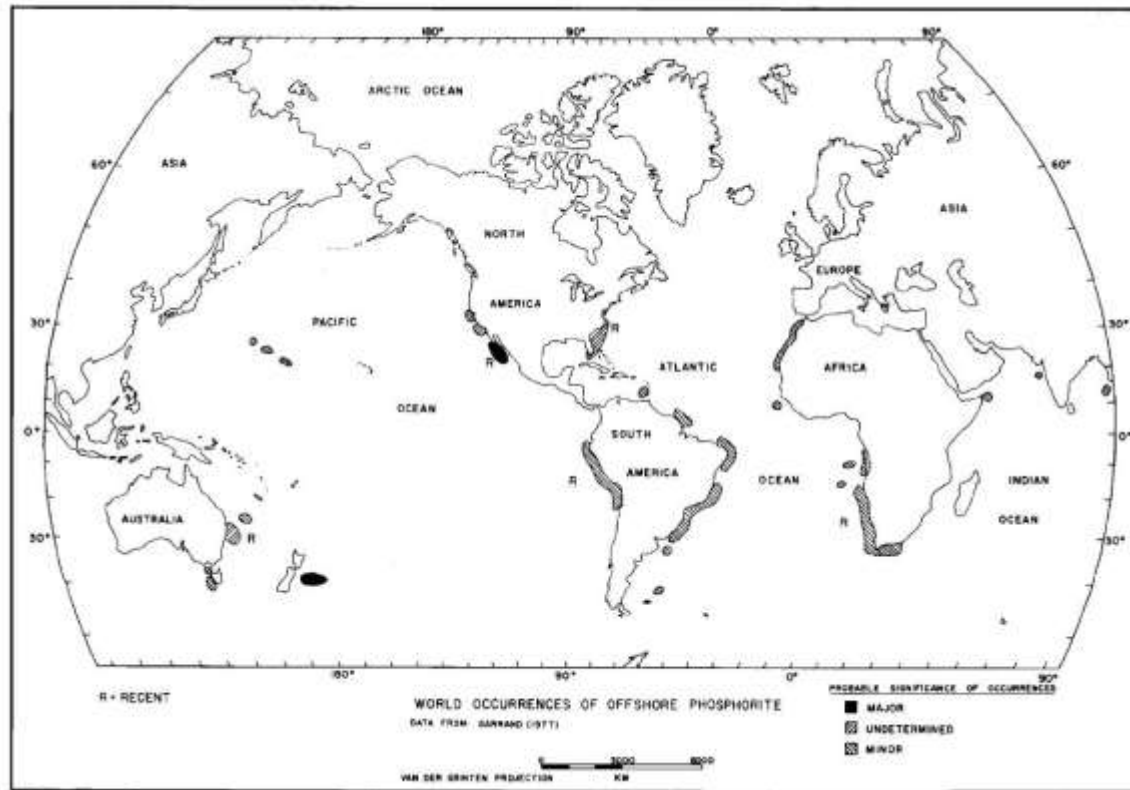
26th IAGS Conference, Rotorua, New Zealand

Outline

- Chatham Rise geology and paleoceanography
- Deposit characteristics:
 - Nodule shape and texture
 - Geochemistry
- Conclusions
 - Are there signs of multiple phosphatisation events on the Rise?



World Class Phosphate



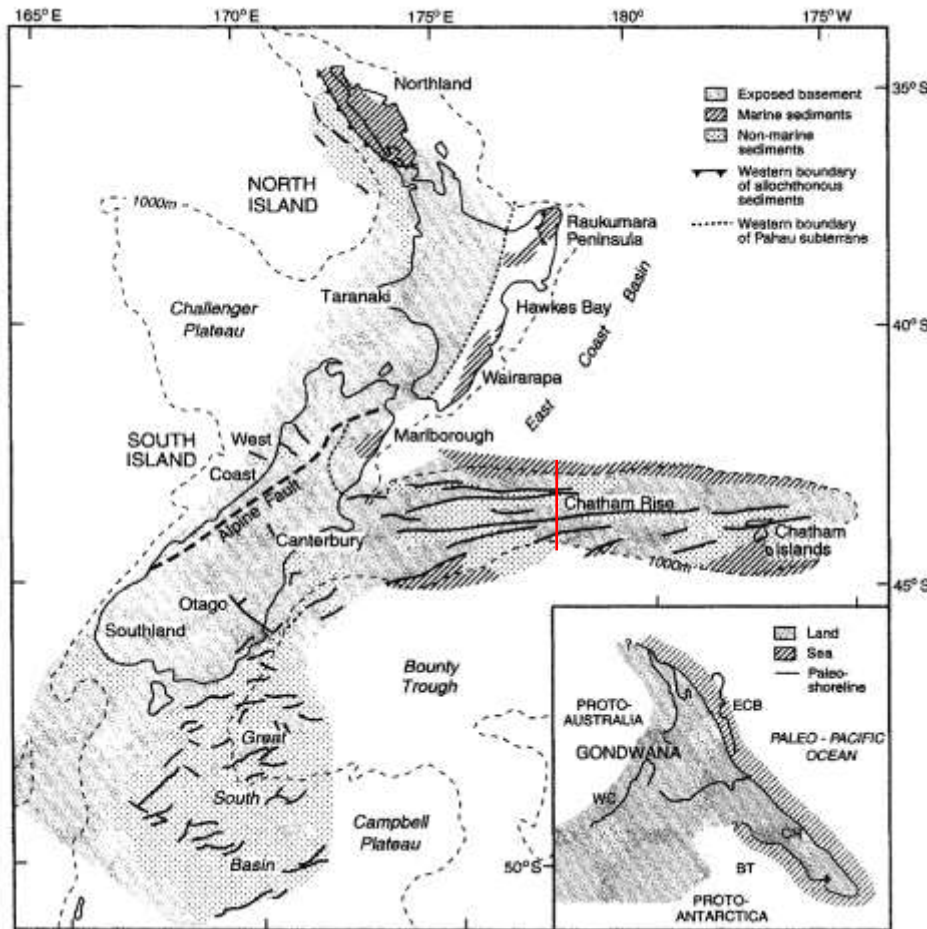
Mullich & Rasch 1985

Phosphate known from samples on the Chatham Rise since 1952

Chatham Rock Phosphate holds an exploration license over part of the Rise, has applied for a mining license

Kenex is involved in application processing, database management, surveying and prospective/geological modelling

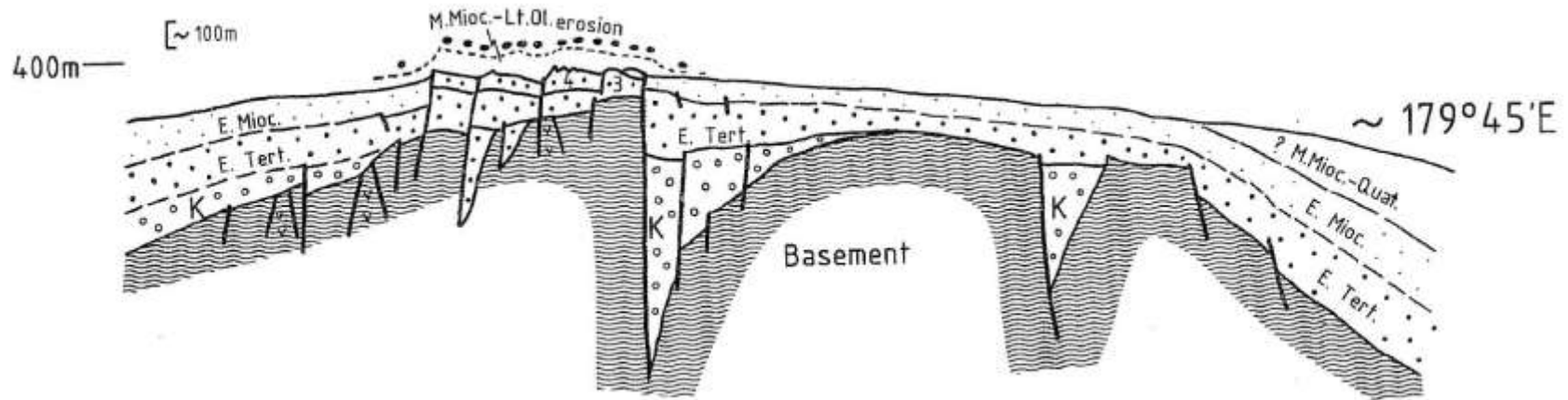
Tectonic Setting



Laird & Bradshaw 2004

- Coherent structural high extending 1100 km east from the South Island.
- Formed through Late Cretaceous rifting from Gondwana, as a volcanic arc.
- The Chatham Peninsula persisted through the Paleocene, followed by limestone deposition in the central and east.

Geology

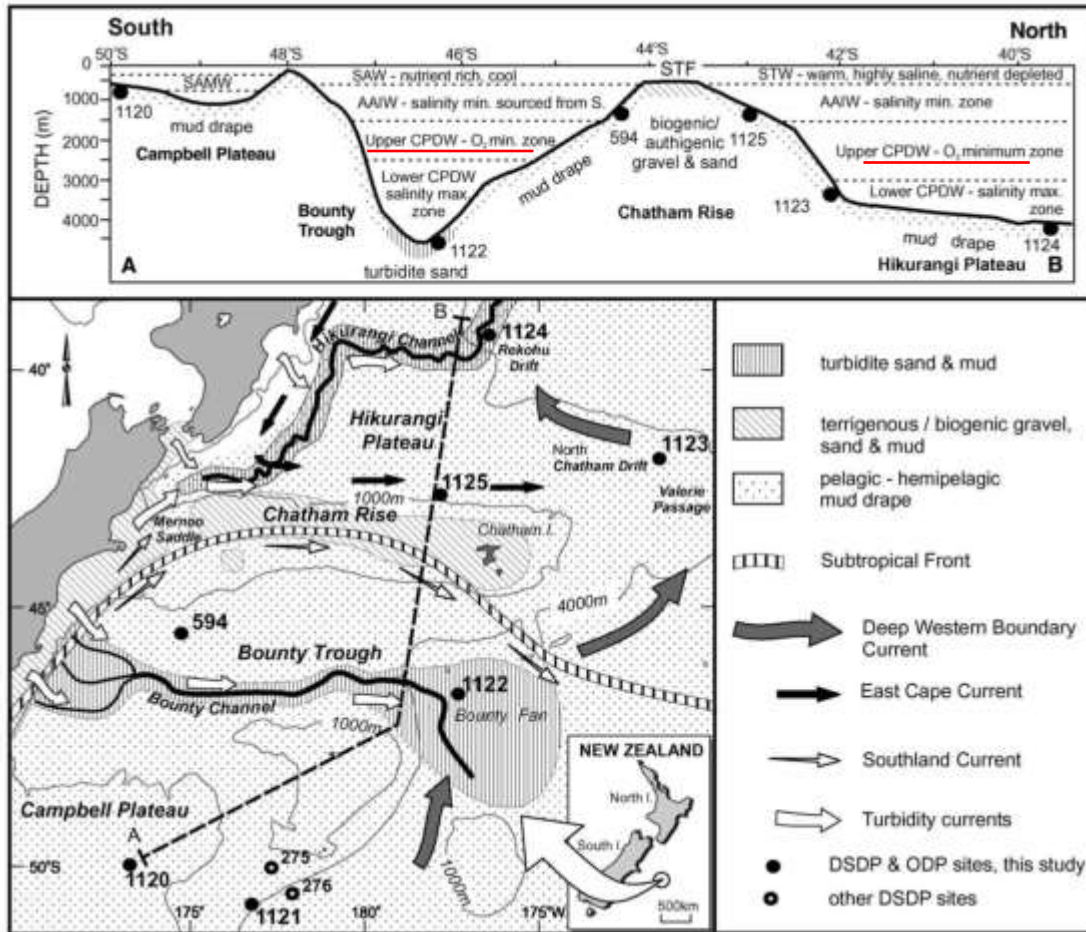


- Cretaceous faulted basement and fault basin fill, followed by hiatus
- Late Eocene cherty marl/limestone– Early Oligocene soft to firm nannofossil chalk, followed by hiatus
- Mid-Miocene limestone and hardground, phosphatised to nodular gravel in Late Miocene as lag deposit on firm to hard Oligocene top surface, overlain by soft Neogene terrigenic/glaucouitic mud.
- Late Neogene phosphatisation, glauconitisation and glacial influence in the Plio-Pleistocene.

Either nodules are the same age as underlying chalk, phosphatisation younger and possibly multistage (von Rad et al 1984)

Or: Early-mid Miocene chalk phosphatised in Late Miocene (12 – 7 Ma, Cullen 1987).

Oceanographic Setting



Modern Subtropical Front on southern flank of Chatham Rise.

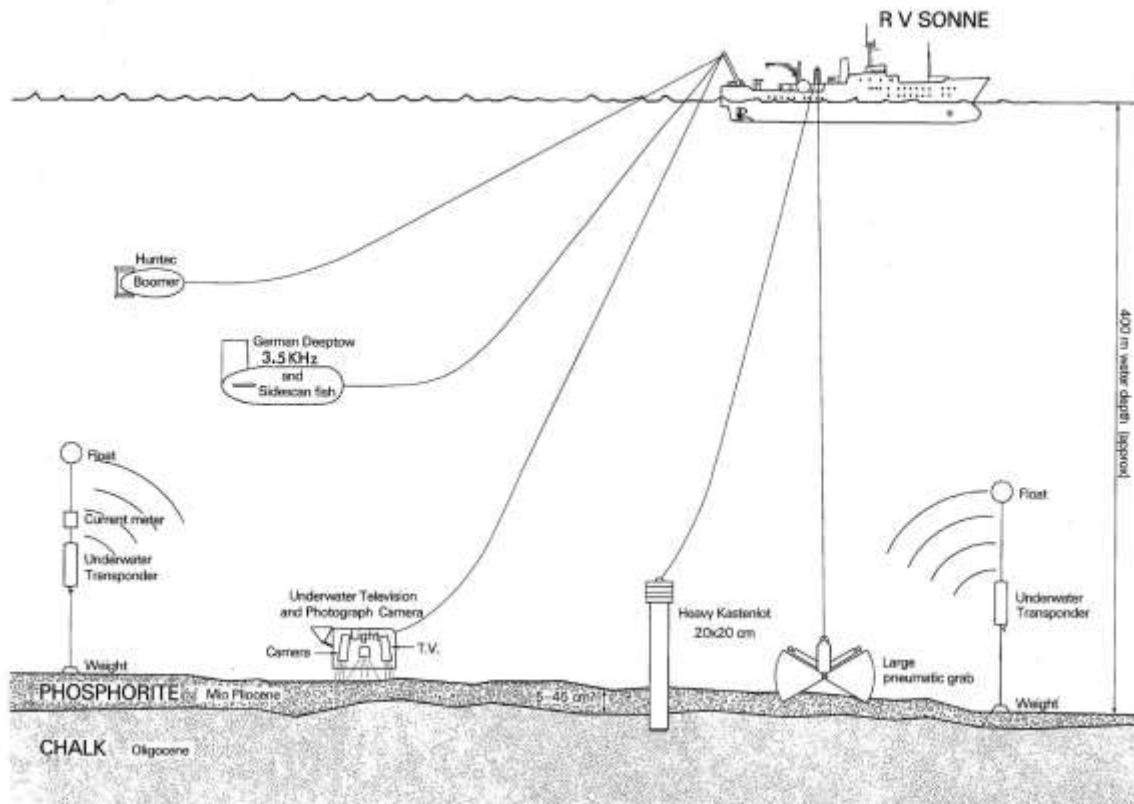
O₂ minimum zone associated with Upper Circumpolar Deep Water

Important feature in S. Pacific paleoceanography.

Deep coring mostly on flanks and in adjacent basins (crest = condensed section).

Hayward et al 2004

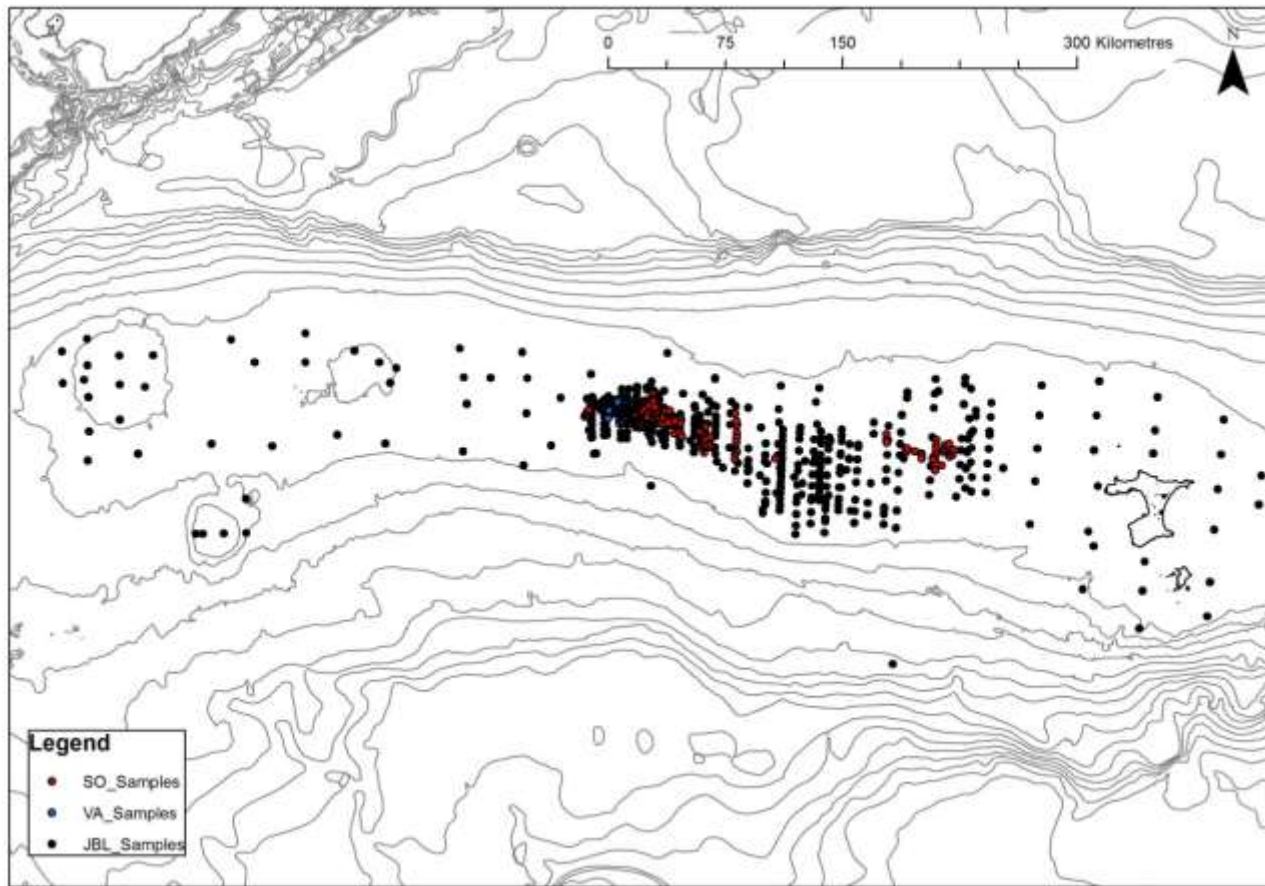
Sampling efforts



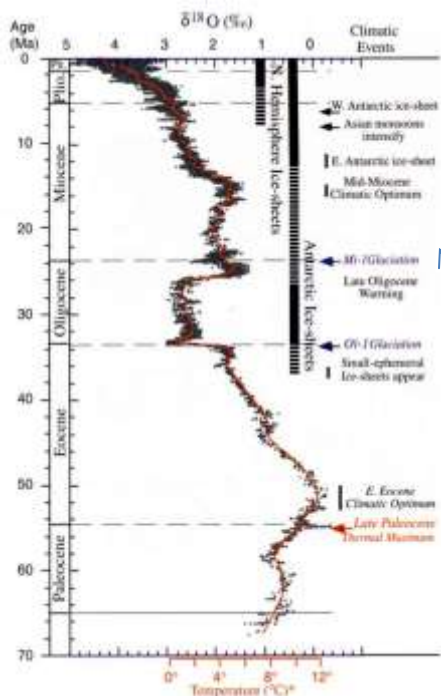
Surveys in the 60s
(Global Marine/JBL),
1978 (*Valdivia*) and
1981 (*Sonne*)

Methods include high-
resolution seismics and
shallow-penetration
sampling.

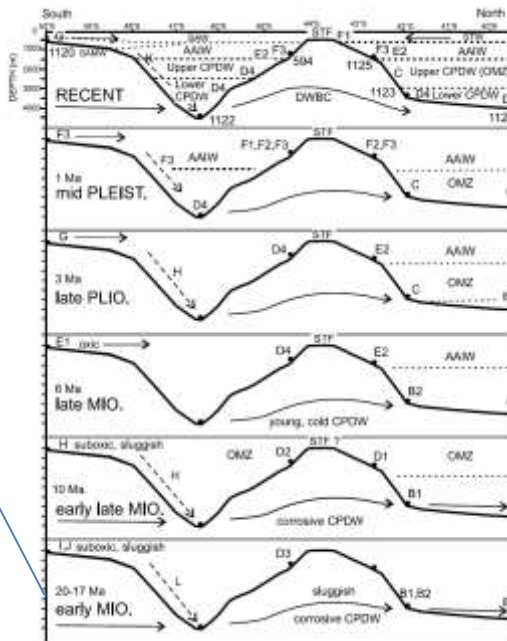
Sample distribution



Paleoclimatology



Zachos 2001



Hayward et al 2004

Deep OMZ

Shallow OMZ

Shallow OMZ needed for phosphatisation on crest?

Phosphatisation during older Austral cooling events as well? (m. Eocene, Eo/Oligo, Oligo/Mio?)

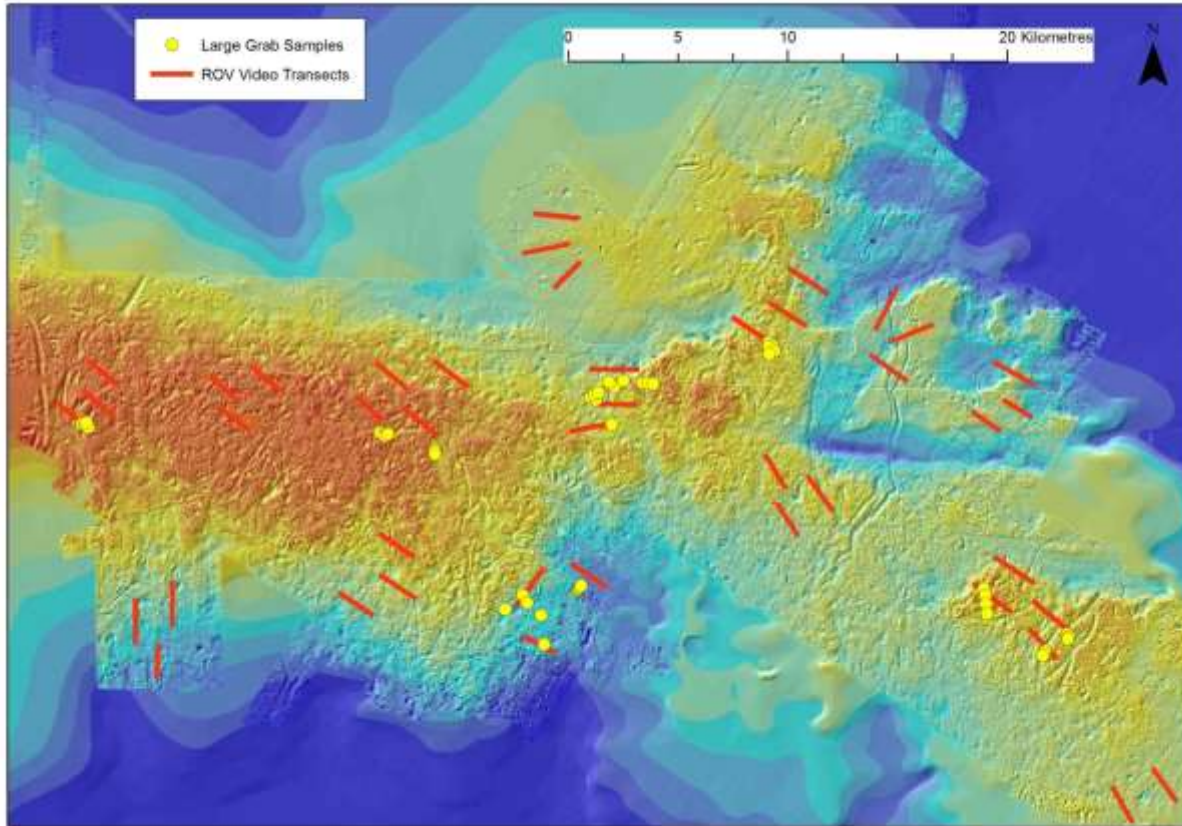
CRP 2011/2012 Surveys



- 4 surveys from Dec 2011 – April 2012
- > 200 samples using grabs, box corers and vibro coring.
- > 1100 km² of multibeam bathymetry
- > 100 km of ROV transects



CRP 2011/2012 Surveys



Irregular seabed, with (glacial) scours and pits

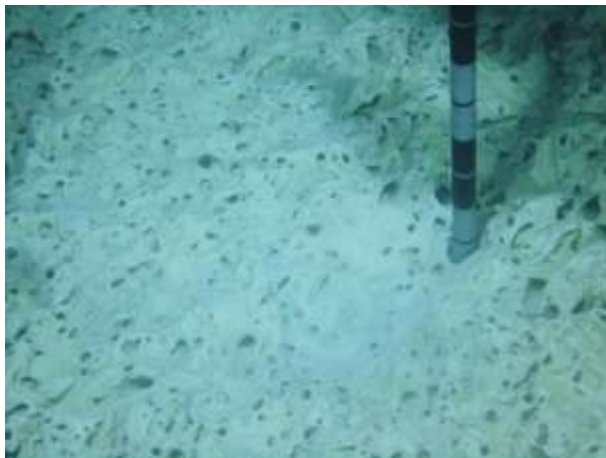
50 large grab samples (500 – 2000 kg / sample)

43 ROV transects for environmental studies

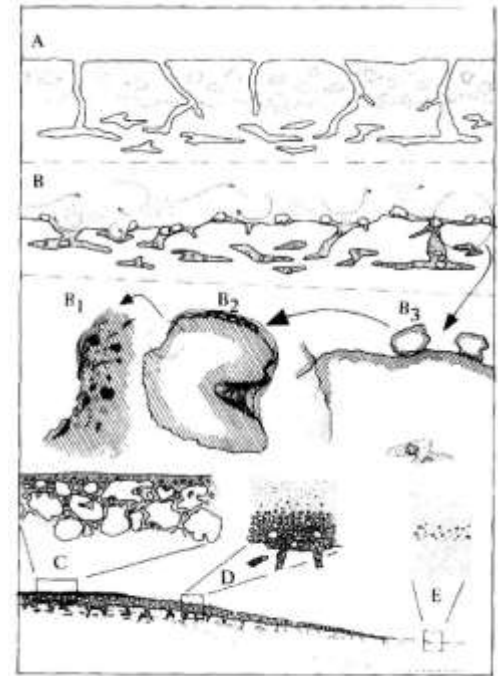
Seafloor Characteristics



- Soupy glauconitic sandy mud over lag layer of phosphatised hardground nodules



- Substrate is a stiff, intensely bioturbated pelagic chalk.



Pedley and Bennett, 1985

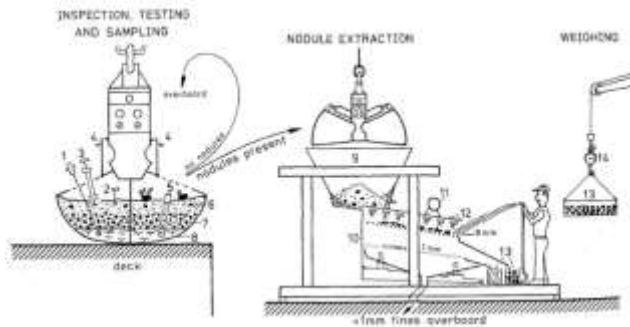
Sampling method



The larger the grain size, the smaller the sample...



Large samples, large efforts



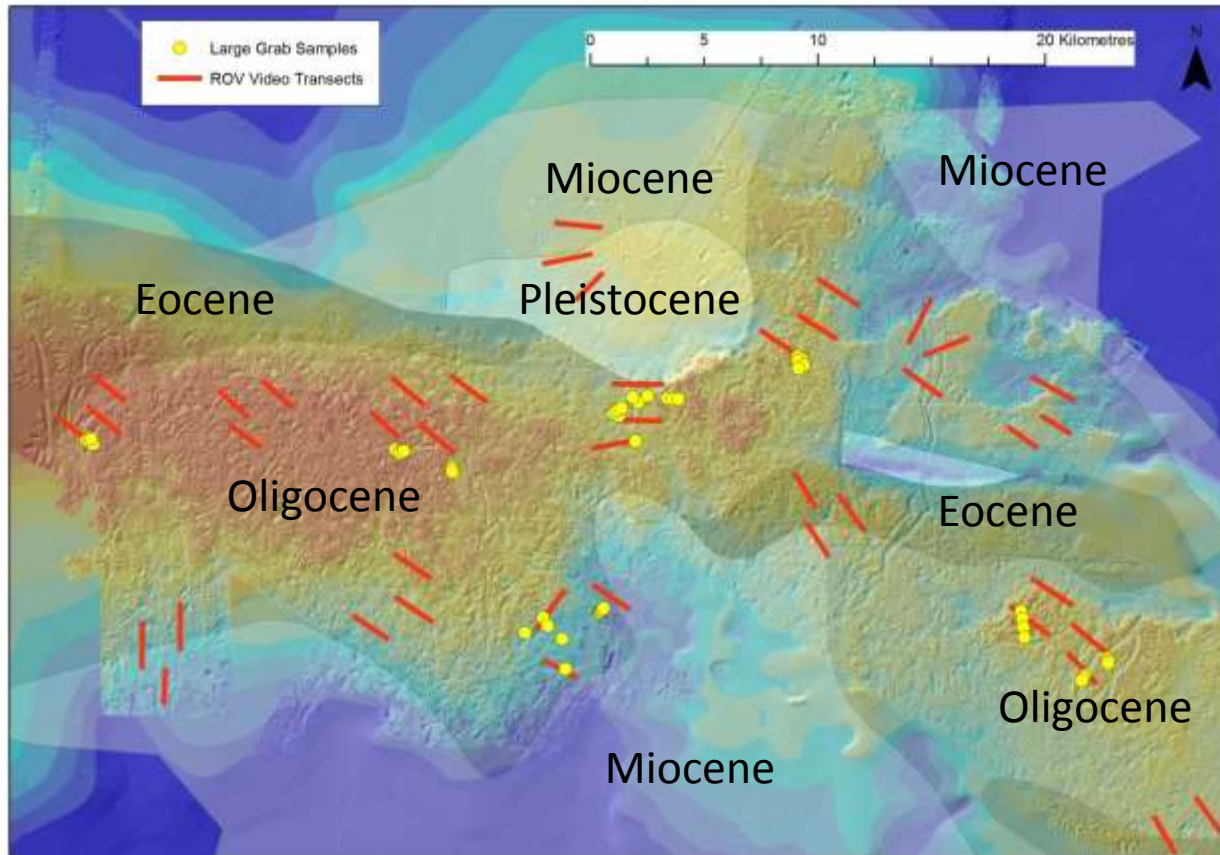
Onboard sample processing,
R/V *Sonne* 1981
Fines were thrown back.

Von Rad & Rösch 1984



Onshore sample processing, 2012
Fines were kept, if washed with freshwater

Multiple Events? Nodule Shape



- Older hardgrounds may have undergone more intensive alteration leading to smoother texture and rounder shape
- Samples mainly from Oligocene seismic facies...

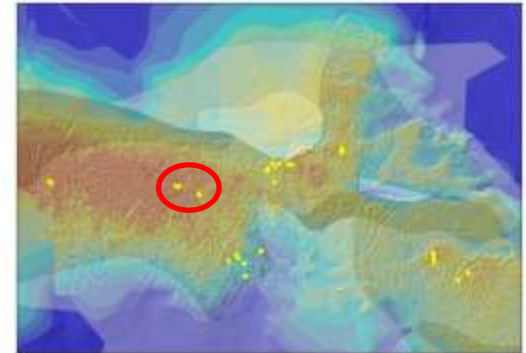
Seismic facies (Falconer *et al.* 1984)

Nodule Shape - Middle of Crest

Round/smooth = most intense alteration
Irregular/rough = less alteration



Rounded, smooth nodules
Most 'mature' deposit?



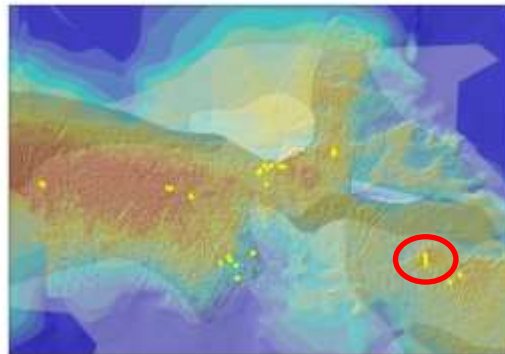
Nodule Shape - Eastern Area



Pitted nodules, obvious bores/burrows

Partially phosphatised and less altered hardground

Less mature deposit?

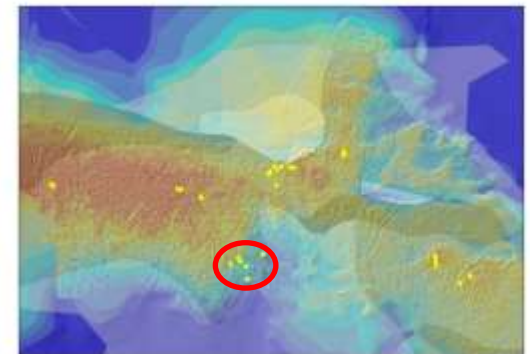


Nodule Shape - Southern area



Irregular nodules, obvious bores/burrows.

Less mature deposit?

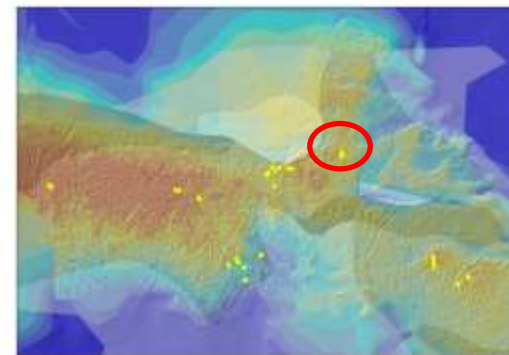


Nodule Shape - Northern Area

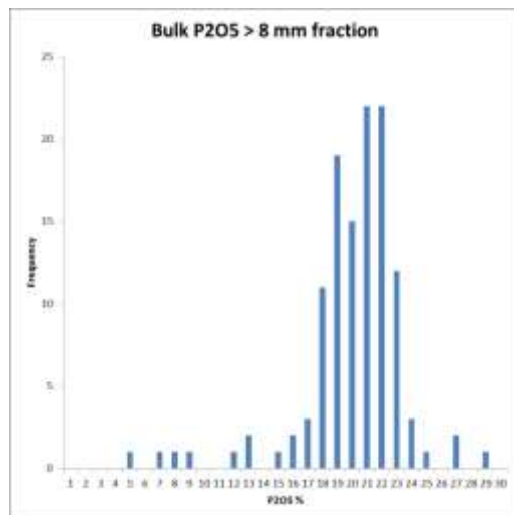


Irregular nodules, pitting, bores, and burrows.

Less mature deposit?

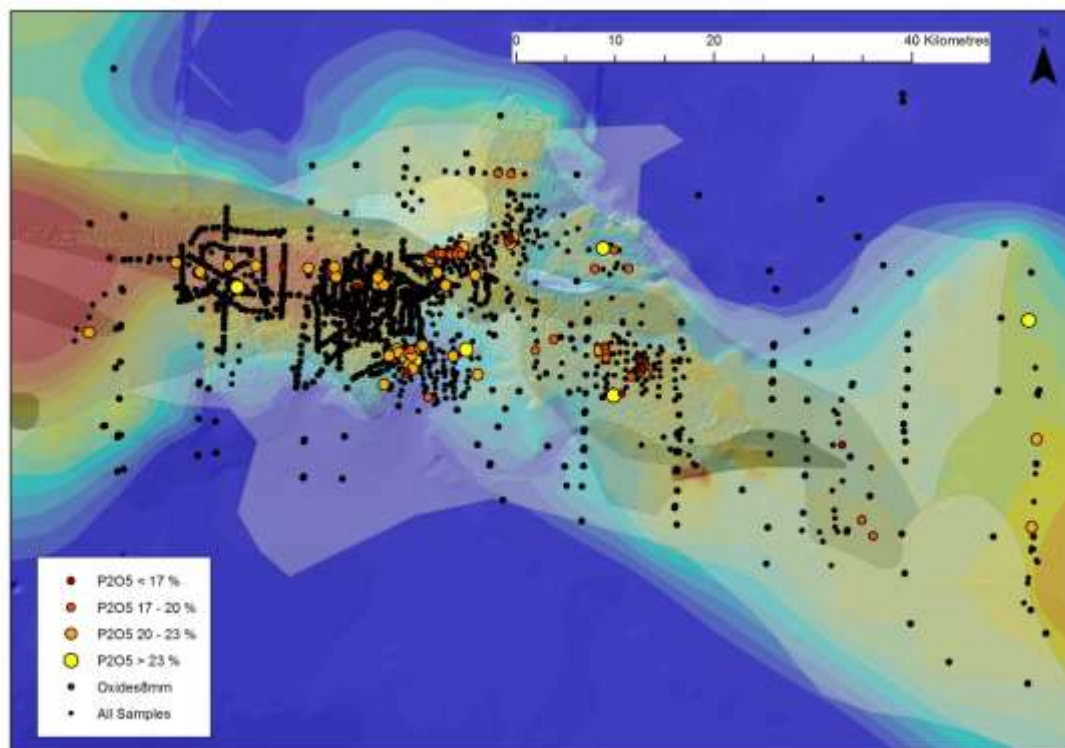


Intensity of Phosphatisation



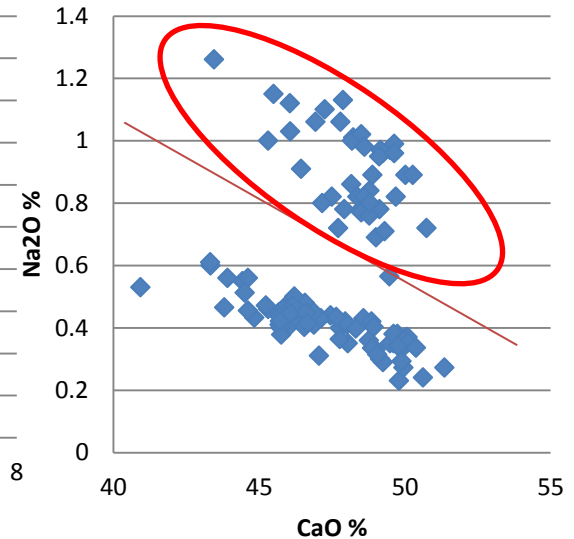
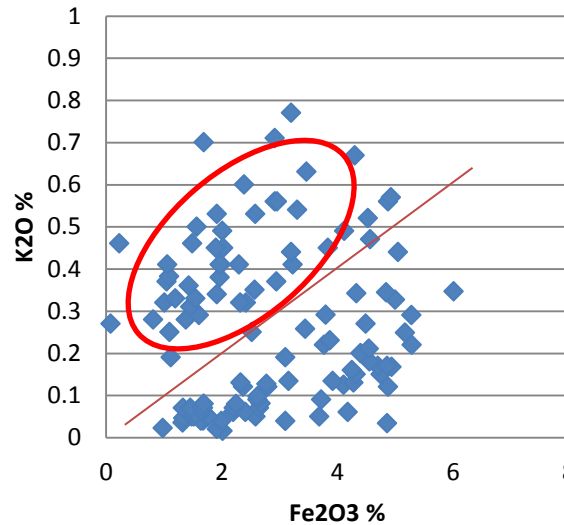
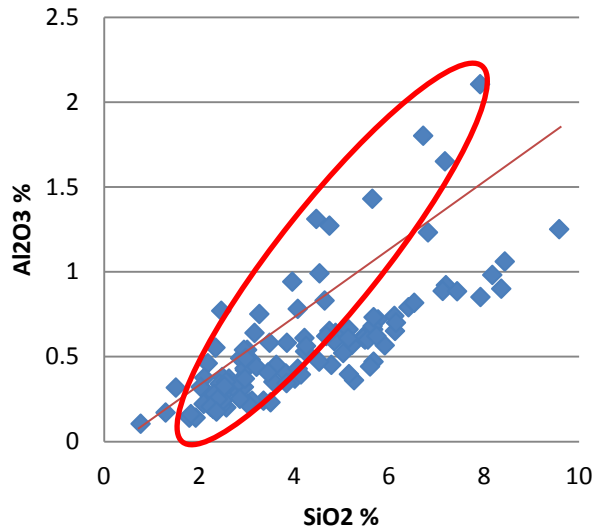
116 samples with XRF geochemistry (out of > 1400)

Tendency for low (and highest?) P points to fall on the periphery



Bulk (XRF) geochemistry, > 8 mm

Geochemical Populations

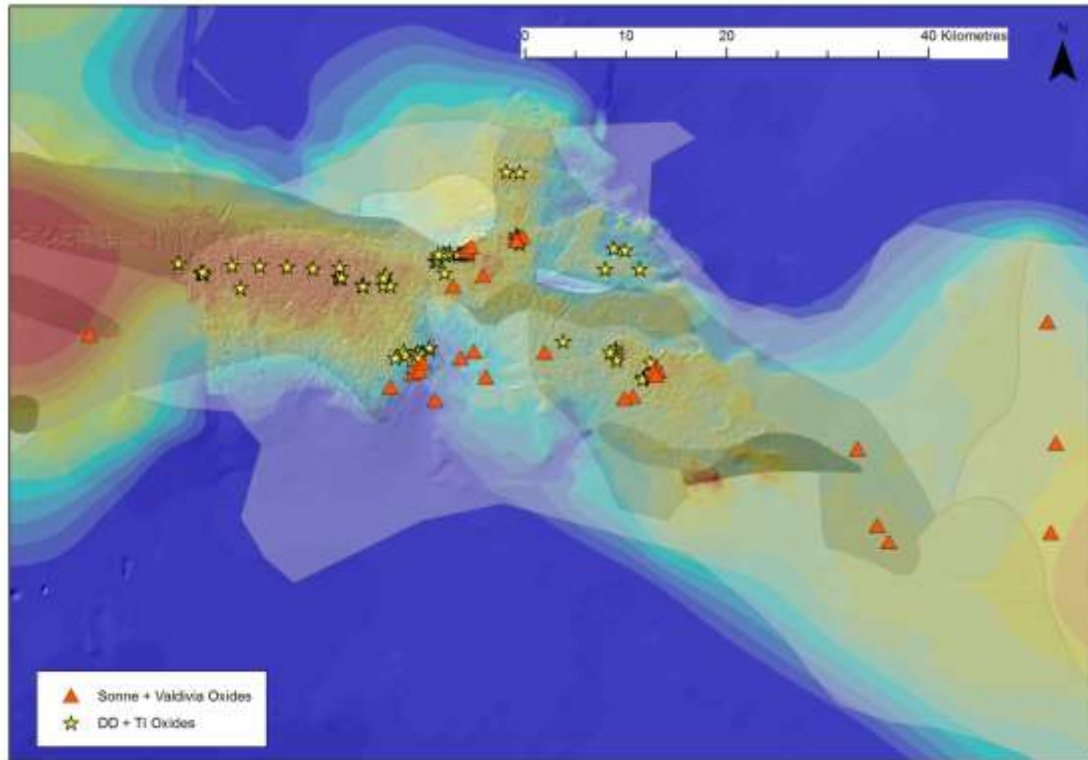


Bulk (XRF) geochemistry, > 8 mm fraction

Signs of 2 populations of phosphate nodule geochemistry
High Al + K = glauconite, but...

High Al + K + Na samples are almost exclusively Sonne/Valdivia samples

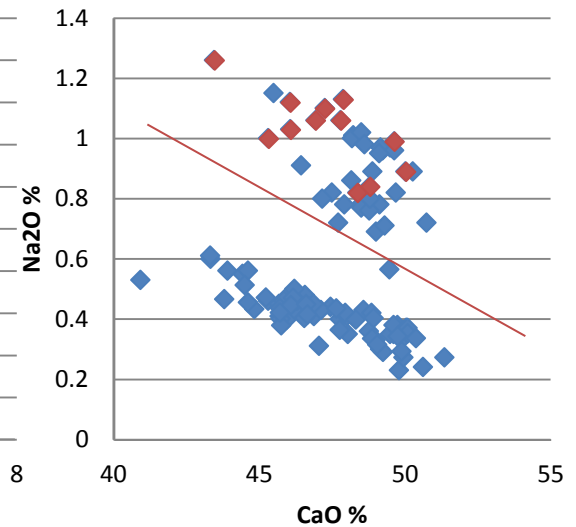
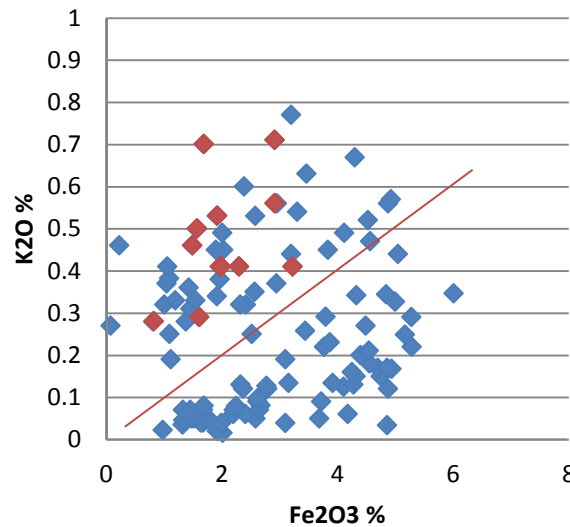
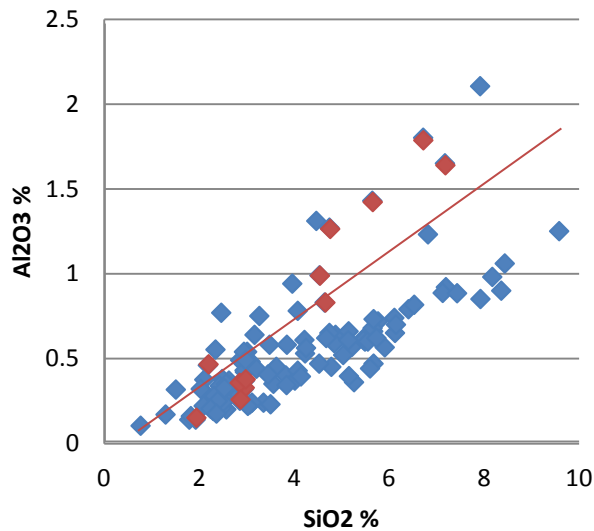
Geochem. Population Distribution



DD and Ti samples are from the western (northern) region, and generally in Oligocene sediment facies.

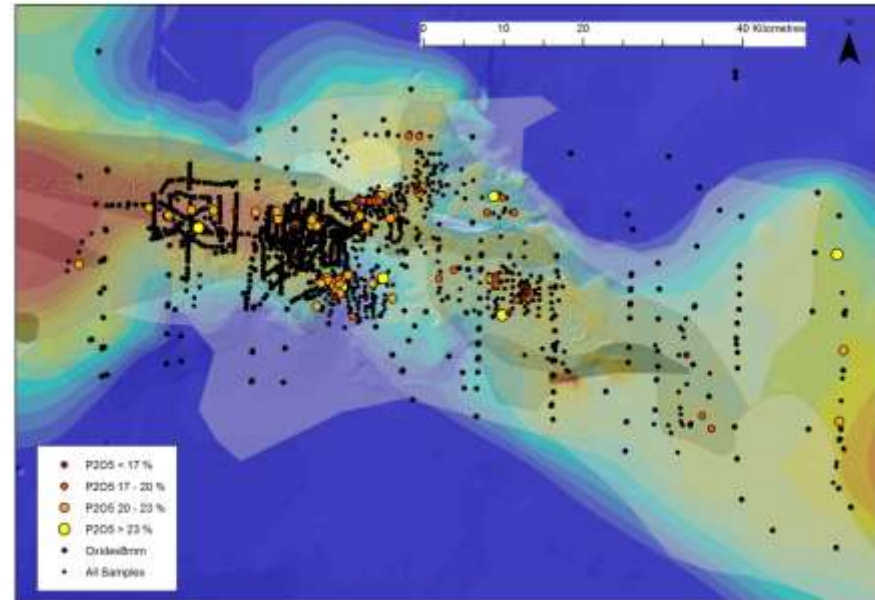
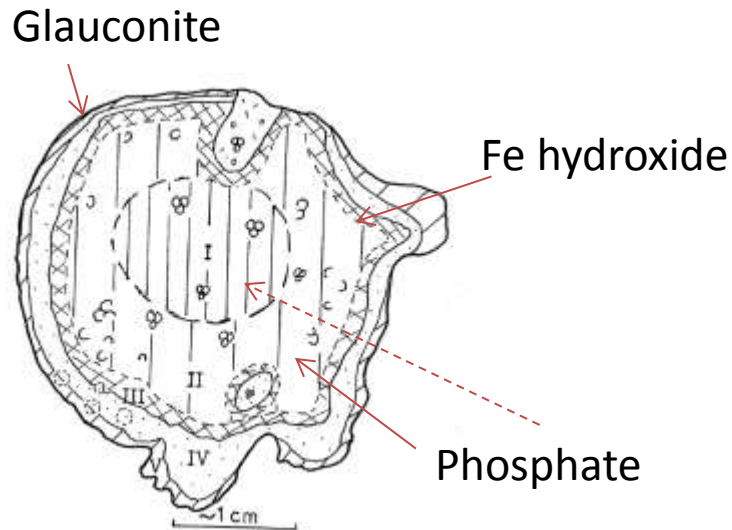
So and Va samples are from the south and east, and often in younger (Miocene) sediment facies.

Oligocene vs. Miocene Nodules



Are the Miocene samples (red points) less 'mature'?

Will the nodules tell the story?



Phosphatisation progressed inwards from the outside.

Can detailed analysis of nodules show multiple phases of alteration? (backscatter, scanning XRF)

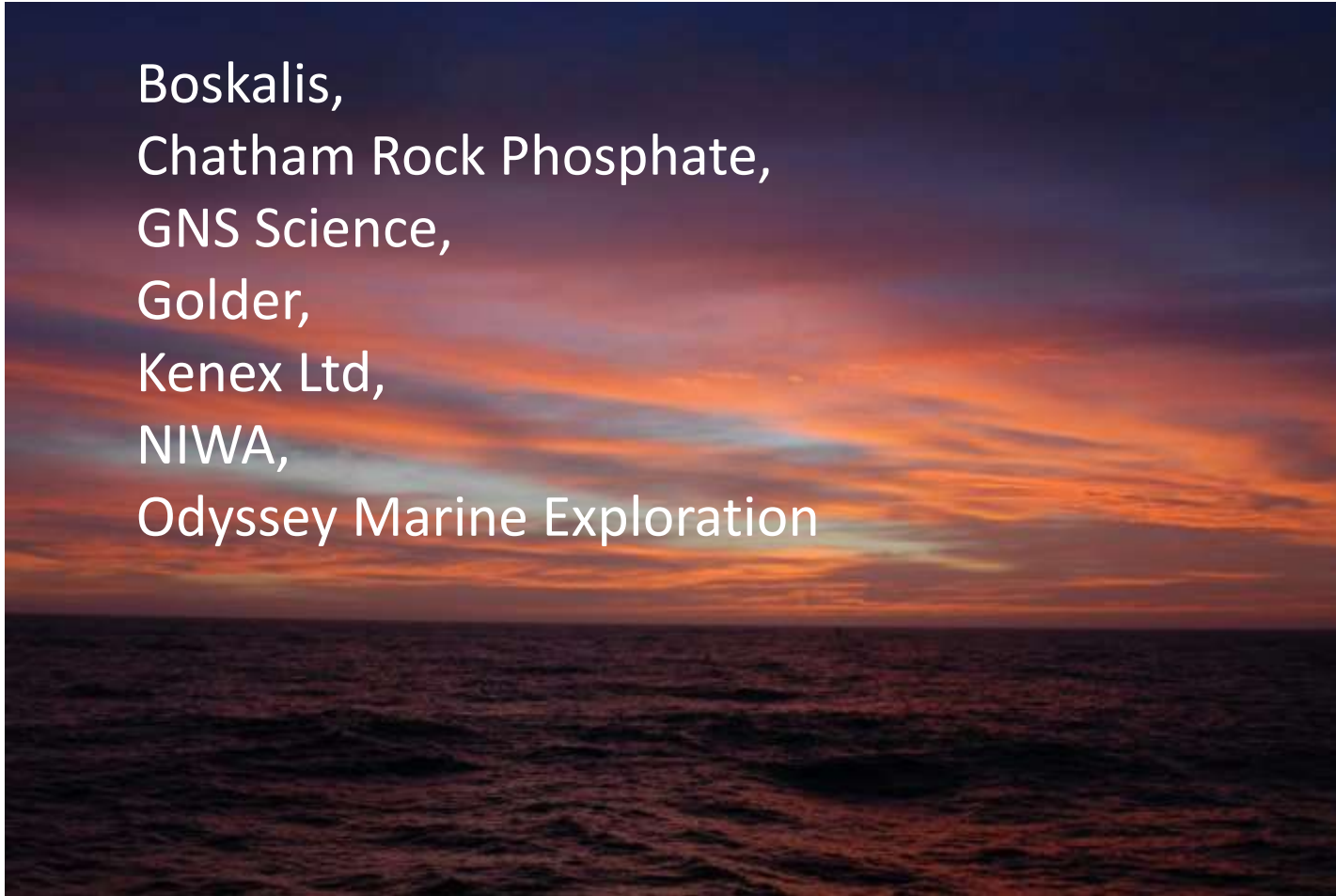
Samples from a wider area wanted!

Conclusions

- Chatham Rise is covered by cool-water pelagic carbonate, hardground rubble and unconsolidated sandy mud. Sediment ages and hiatus tie in with onshore geology (multiple Marshall Paraconf. equivalents?)
- Hardground formation associated with influx of cool bottom water from Antarctic/Southern Ocean events. Phosphatisation associated with OMZ establishment and fluctuation (only shallow OMZ?)
- Nodule shape and texture suggests most 'mature' nodules on the crest compared to margins. Most evenly phosphatised samples are found on the crest compared to the margins (most erosion on crest?)
- Most geochemically immature nodules are associated with marginal and younger sediment facies (lab factor versus locality issues)
- Individual nodule analysis can reveal possible multistage phosphatisation

Thanks to Collaborators at...

Boskalis,
Chatham Rock Phosphate,
GNS Science,
Golder,
Kenex Ltd,
NIWA,
Odyssey Marine Exploration





PO Box 41136, Wellington, New Zealand

W: www.kenex.co.nz

E: info@kenex.co.nz

